

## ADVANTAGES/BENEFITS

- The design of the saddle flange SF allows for simple installation when inserting the channel
- The strong construction offers a secure hold for a load-bearing construction

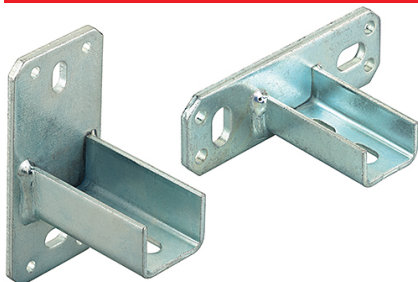
## APPLICATIONS

- For solid connections between the channel and building structures

## PROPERTIES

- Material: Steel DD11 (material no. 1.0332) acc. to DIN EN 10111
- Zinc plating: electro zinc plated, min. 8 µm

## TECHNICAL DATA



Saddle flange SF

Article name	Art.-No.	Version	Sales unit [pcs]
SF Q 38	079410	horizontal	10
SF L 38	079586	vertical	8