

ADVANTAGES/BENEFITS

- The various shapes of the connecting elements offer flexibility when it comes to the installation of rail constructions
- The holes in the connecting elements make them compatible with the FCN Clix P

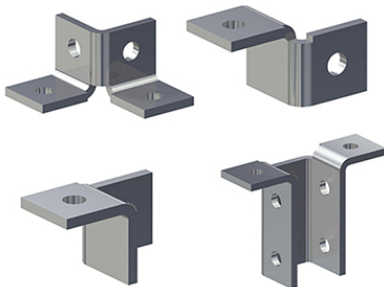
APPLICATIONS

- Connecting elements for multi-dimensional rail constructions

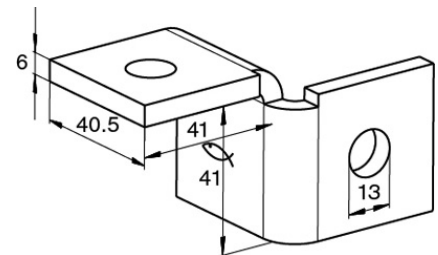
PROPERTIES

- Material: steel S235 JR (material no. 10037) acc. to DIN EN 10025
- Zinc plating: electro zinc plated, min. 5 µm

TECHNICAL DATA



Flanges FUF



Article name	Art.-No.	Sales unit [pcs]
FUF 4Y	504378	20
FUF 180°L	504379	20
FUF 180°R	504383	20
FUF 8T	504387	10